

# Word Processor for Kids!

## User Guide

for Version 1.1, 1997

by David Lazarus

## **Introduction**

TykeWriter is a word processing program intended for children who are learning to read and write. It is trivial to learn and use. TykeWriter can be used without the keyboard, using only the mouse and on-screen alphabet. This makes the child's task of learning to write much simpler. The child is no longer confused and distracted by having to look down at the keyboard to find each character's hiding spot. Also, the child is presented with only the features that s/he are likely to use. As the child develops, new features can be added by changing the level setting for that child.

The "Grown-Up", a parent or teacher, can customize TykeWriter to best suit each child using the "Grown-Ups" pull down menu. The Grown-Up should set the "Level". The "Level" determines a number of different TykeWriter features. Many of these features can be overridden using the other Grown-Up menu selections. The levels are defined as follows:

- |                     |   |
|---------------------|---|
| <b>Beginner</b>     | Only the most essential set of features are included.   |
| <b>Intermediate</b> | Adds lowercase characters, a print button, and a simple tool for selecting predefined styles.   |
| <b>Advanced</b>     | All of TykeWriter's features are enabled. This includes the ability to open and close documents. Also, text can be copied and pasted. An easy to use tool for selecting text color, font and style is also added. |

## **Feature Selection**

TykeWriter is a basic What You See Is What You Get text editor. Text may be entered either by typing on the keyboard or by clicking on the Alphabetic Screen Keypad. A consecutive string of text may be selected for modification by pressing the mouse button at the beginning of the string and releasing it at the other end of the string. This line will mark the other end of the selected text.

### **Beginner Level Features:**



**New Line Button** Same as typing **return** on the keyboard.



**Erase Button** Same as typing **delete** on the keyboard.



**Read Button** If no text is selected, it reads the

document. If text is selected (and Highlighted), the selection is read. This button will not appear if the Speech Manager is not installed. If your computer does not have a Speech Manager, see the TykeWriter website for Speech Manager download instructions. Use the Speech Control Panel to select different voices.



**Exit Button** The TykeWriter program will stop running.

Before that can happen, the user is asked to name and save all open documents. All documents are saved into the child's default directory.

### **Intermediate Level Features:**



**Print Button** The document is printed on a printer.



The selected text is reformatted to the selected style.

### Advanced Level Features



**Grab Text Button** The selected text is remembered for use with the Drop Text Button and other Macintosh programs.



**Drop Text Button** The last text grabbed is inserted into the document at the current insertion point. Text cut or copied from other applications can also be dropped into the TykeWriter document.



**Exit Button** Makes all of the letters on the alphabetic on-screen keypad upper case.



**Open Button** A Open File dialog box allows the user to navigate through the computer (or network) to select and open either TEXT or TykeWriter documents.

**Save Button** A File Close dialog box allows the user to



navigate through the computer (or network) to store and name the documents.



**Accent Button** Lets you add an accent to the last character typed. Actually, It picks the character to the left of the insertion point. if that character can be given an accent in the Macintosh character set, a mini-keypad is displayed with all of the possible diacriticals for that base character. Clicking on an accented characters will replace the original character with the selected one.



**Style/Color Button** Click this button to select the Style/Color keypad. A red box around this button indicates that it is selected.



**Alpha Keypad Button** Click this button to select the

alphabetic keypad. A red box around this button indicates that it is selected.



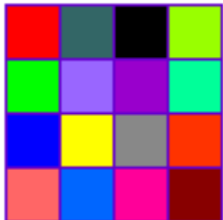
**Enlarge Text Button** Each time this button is click,

the size of every selected character increases by two points. If no character is selected, the size of the next character to be typed will increase by two points



**Shrink Text Button** Each time this button is click, the

size of every selected character decreases by two points. If no character is selected, the size of the next character to be typed will decrease by two points



**Color Picker**

Clicking on any of the colored squares sets the color of

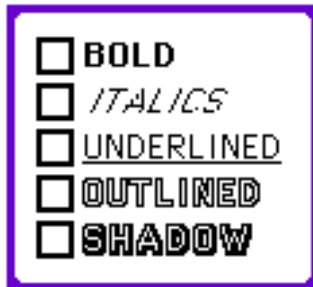
every selected character to the color of the colored square. If no character is selected, the color of the next character to be typed will be the color of the square



**Font Picker**

Clicking on any of the fonts sets the font of every

selected character to the selected font. If no character is selected, the font of the next character to be typed will be the selected font.



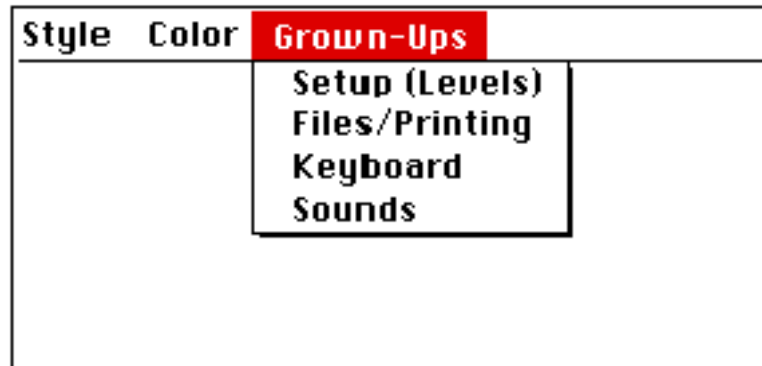
**Style Picker**

This tool can set or clear the style characteristics of the

selected text. If no text is selected, it changes the style of the next characters typed.

## **Configuration**

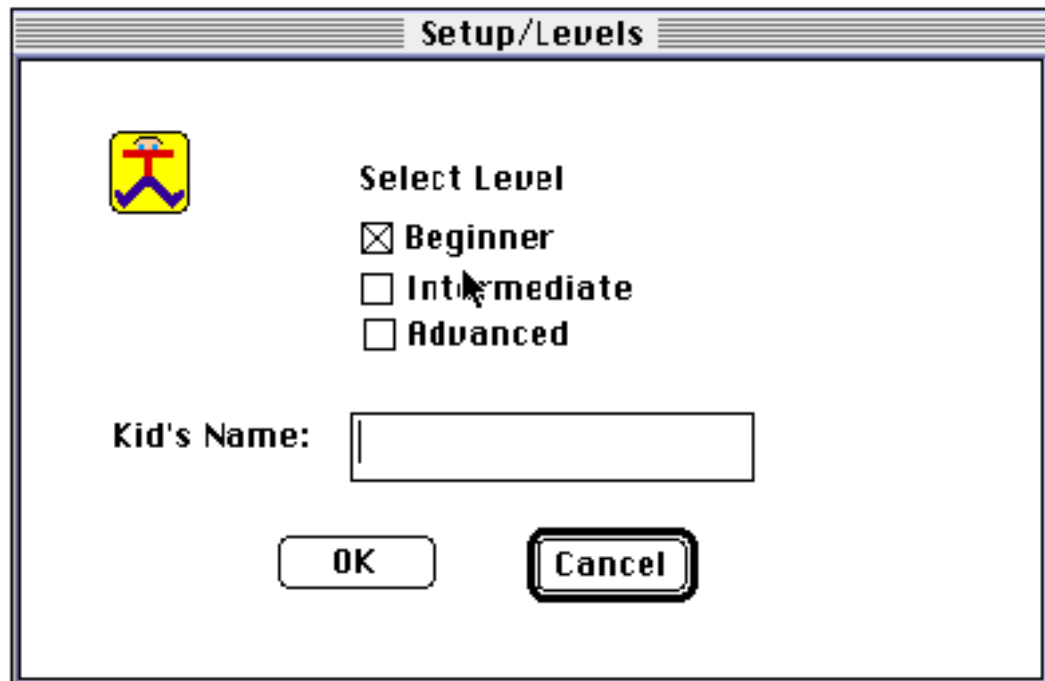
TykeWriter can be customized for each child. To reconfigure the child's settings, run that child's version of TykeWriter. After initialization, pull down the "Grown-Ups" menu and select the appropriate option category. The categories and the options are explained in the following sections.



Each child's options are stored in a file named "Tyke's Settings." To find a specific child's options, TykeWriter must find the correct "Tyke's Settings" file. Usually, TykeWriter is opened by either opening the "Tyke's Settings" file or a TykeWriter document. In the document case, TykeWriter selects the "Tyke's Settings" file in the same folder. In other words, each child should have their own folder. Inside that folder should be a "Tyke's Settings" file and all of their TykeWriter documents. Aliases of that "Tyke's Settings" file can be renamed and moved anywhere in the system.

## **Setup/Level Options**

The Setup/Level options identify the child's name and identifies a skill level. Many of these selections can be overridden.



The "**Kid's Name**" is used for generating default file names.

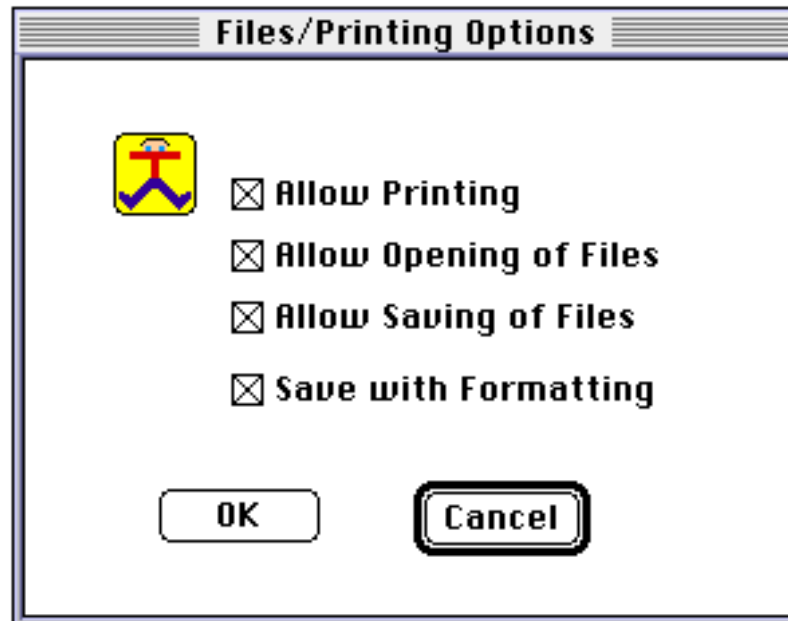
The "**Skill Level**" selects the features which will be enabled for that child. Changing the level will set the selection of features to the default for that level.

The "**Cancel**" button will cause the selected feature to be reset. The "**OK**" will cause the selected settings to be stored into the Tyke's Settings" file and remembered for future uses of TykeWriter.



## Files/Printing Options

The files/printing options controls the opening, saving and printing of documents (files).



The “**Allow Printing**” option adds the printer icon and as a result, allows the child to print the current document.

The “**Allow Opening of Files**” option will add the “Open Button.” Pressing this button will allow the child to browse the computer for TEXT and TykeWriter documents to open.

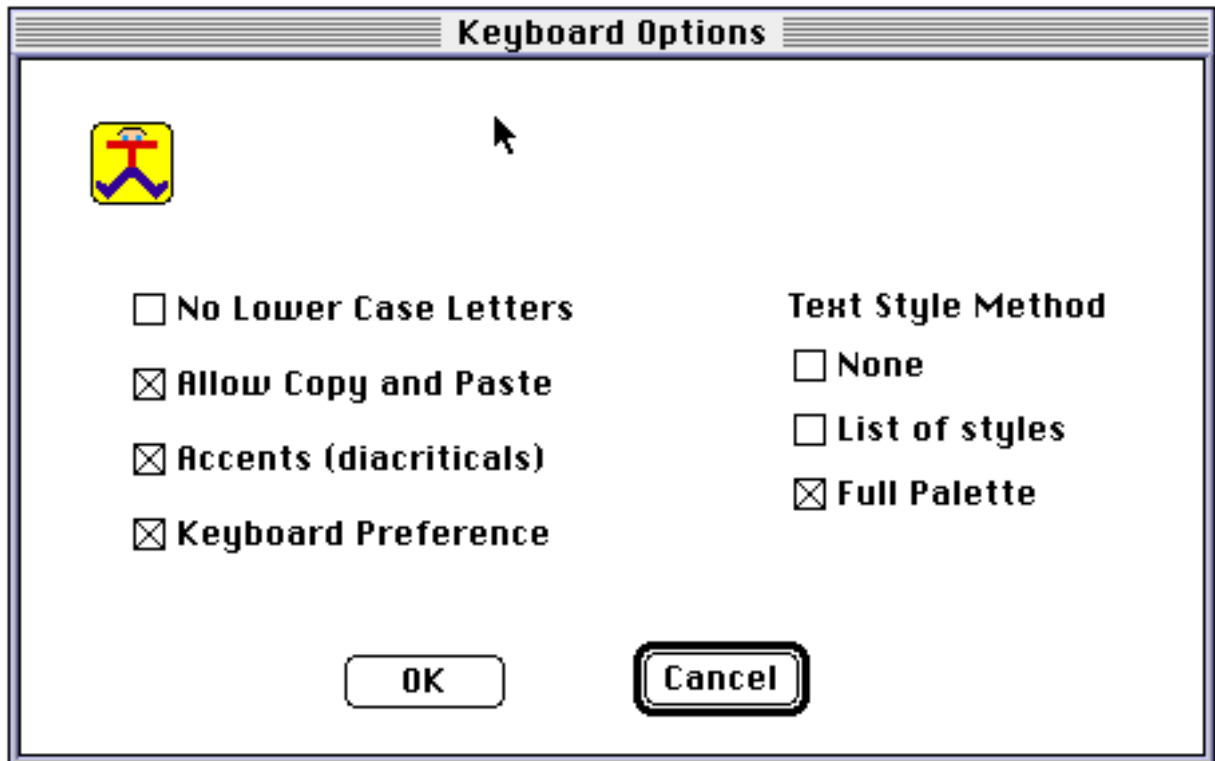
The “**Allow Saving of Files**” option will add the “Save Button.” Pressing this button will bring up the standard save dialog window. This will allow the child to save the TykeWriter document in any folder. Without this option selected, the document may only be saved in the child default folder. This will only happen when the “Exit” key is pressed. For most kids, this option should not be selected.

Not selecting the “**Save with Formatting**” will cause TykeWriter to save files as TEXT files. Leave this selected unless you are exporting the document to a software package.

The “**Cancel**” button will cause the selected feature to be reset. The “**OK**” will cause the selected settings to be stored into the Tyke's Settings file and remembered for future uses of TykeWriter.

## Keyboard Options

The Keyboard options controls which on-screen features are available.



Selecting the “**No Lowercase Letters**” removes the “Shift” key from the alphabetic keypad and makes the keypad all uppercase.

Selecting the “**Allow Copy and Paste**” option adds the “Grab” and “Drop” buttons. This allows the child to move sections around the document.

Selecting “**Accents (diacriticals)**” adds the “Accent” key and allows the child to add diacriticals characters.

The “**Keyboard Preference**” option only applies to kids who are using the “Full Palette.” When selected, the Full Palette is default mode. If not selected, the alphabetic pad is the default. This feature is designed to help kids who want to use a real keyboard.

The “**Text Style Method**” allows the selection between method of applying color and style to text. The “**List of styles**” tool allows the child to pick from a list of predefined styles. The “**Full Palette**” gives the child the flexibility to independently select font, size, color and style.

The “**Cancel**” button will cause the selected feature to be reset. The “**OK**” will cause the selected settings to be stored into the Tyke's Settings” file and remembered for future uses of TykeWriter.

## **Sound Options**

The sound options select the sound the program will make when a letter is typed on the on screen alphabetic keypad. Currently, typing on the keyboard does not generate any program sounds



If the “**None**” box is checked, no sound will be made when an on-screen key is clicked.

If the “**Say Letter**” box is checked, the letter will be spoken each time an on-screen key is clicked.

If the “**Say Click**” box is checked, a click sound will be made each time an on-screen key is clicked.

If the “**Typewriter Sound**” box is checked, a typewriter sound will be made each time an on-screen key is clicked.

The “**Cancel**” button will cause the selected feature to be reset. The “**OK**” will cause the selected settings to be stored into the Tyke's Settings” file and remembered for future uses of TykeWriter.

## The Desktop

TykeWriter uses desktop icons for a simple interface with the Macintosh.



TykeWriter

### The TykeWriter program.

Keep only one copy of TykeWriter on your computer. It should be stored with the computers other application programs. To upgrade TykeWriter to a new version, simply drag the old one to the trash and replace it with the new one. Then rebuild the desk top as described in the Macintosh User's Manual.



bug

### TykeWriter document

This document is named "bug," you can choose your own name. It can be renamed as you choose. To update it, double click on it (or open it).



For PC

### TykeWriter TEXT document

Although **TEXT documents** contain no style, font or color information, they can be a useful format for exporting text to other word processors. This document is named "For PC," you can choose your own name. It can be renamed as you choose. To update it, double click on it (or open it).



Tyke's Settings

### Tyke's Settings

The **Tyke's Settings** file contains the personal settings for a child. Usually its is stored in the child's **personal folder**. Whenever TykeWriter runs, it automatically reads in the **Tyke's Settings** file which was in the same folder as the document being opened. If no **Tyke's Settings** file is in the same folder, the default settings are used. Updating the settings will create a new **Tyke's Settings** file. Double clicking on the **Tyke's Settings** file will invoke TykeWriter with the corresponding settings. An alias of the **Tyke's Settings** file can be renamed and moved to new folders, the desk top or the launcher. Double clicking on the alias will invoke TykeWriter with the corresponding personal settings.



Billy

### Child's Personal Folder

Each child who uses TykeWriter, should have their own Personal folder. It can have any name and can be stored anywhere except the **System Folder**. It should contain exactly one **Tyke's Setting**. TykeWriter saves and opens documents in this folder.

## **Hardware/Software Requirements:**

TykeWriter was developed using version 7.1 of the System Software. It has also been tested on 7.5. It should work with all desktop Macintosh running any version of System 7. Its DRAM and disk requirements are below one megabyte. This version of TykeWriter is not suited for lap tops because of the smaller screen size. I doubt that TykeWriter runs correctly under System 6 and older OS releases. Please let me know if it does!

## **Installation**

TykeWriter can be used without proper installation and setup by simply double clicking on the TykeWriter Icon.

To correctly install TykeWriter:

- 1) Drag the TykeWriter folder onto a hard drive. If you have a folder labeled "Applications", that would be a good place to store the TykeWriter folder.
- 2) Regardless of where you stored it, double click on the TykeWriter folder. For each child who will be using TykeWriter, repeat the following steps:
  - Duplicate the "Sample Kid" folder and rename after the child. Drag the new folder to a logical place on the hard disk if you want. Your child should store his or her masterpieces in that folder.
  - Double click on the child's new folder. Inside will be a file labeled "Tyke's Settings". Select that file by clicking on it once make an alias of it by pulling down the file menu and selecting the "Make Alias" command. Rename the new alias file to the name of the child. Leave the file "Tyke's Settings" unchanged.
  - Drag the new alias file to either the desk top or the launcher (or both). The child should run TykeWriter by double clicking this alias.
- 4) Look down at the lower right corner and find the "READ" button. It should be just above the "EXIT" button. If the "READ" button is not present, the Speech Manager is not running on your machine. TykeWriter will work without the Speech Manager but you will be missing a great feature. To install the Speech Manager, do the steps in the following section.

## **How to Get the Speech Manager:**

The Speech manager can be downloaded from the following Apple URL:

<http://speech.apple.com/ptk/ETTS.hqx>

- The download should produce a document named "ETTS.hqx" on your computer at the location you select.

- Double clicking on "ETTS.hqx" will run Stuffit Lite.
- Click on the "English Text-to-Speech" folder once to select it. While running Stuffit, pull down the "Archive" menu and select "UnStuff." It will ask for a location on your machine to store the folder. Select a location and press "UnStuff."
- A folder named "English Text-to-Speech" will be created. Open (double click) this folder. Inside is a document named "Using English Text-to-Speech." Open this document and follow the installation directions.
- When you have the Speech Manager installed, test it out on TykeWriter. When it works, you can throw out both "ETTS.hqx" and the "English Text-to-Speech" folder.
- My website will have a page of information about downloading and setting up the Speech Manager.

## **For More Information**

TykeWriter has web-site provides information about new releases, documentation, bugs and reviews. It is at:

**"<http://w3.icdc.com/~lazarus/tykewriter.html>"**

Please report any problems and send comments to:

**[lazarus@icdc.com](mailto:lazarus@icdc.com).**

## **Legal Information**

This manual, *TykeWriter User Guide for Version 1.1* may be copied and distributed for free. Its use is limited to educational and recreational purposes. Use it at your own risk. We are not responsible for any damages arising from use of this manual or of the associated software.

All rights reserved. This manual may only be copied in its entirety and may not be modified.

If you send \$10, we will be forever grateful. Please make checks payable to David Lazarus and send to the following address:

David Lazarus  
7852 Spring Ave.  
Elkins Park, PA 19027